

Evaluate-CellApps-Lite

Please follow the below steps to start using CellApps-Lite application. Please Refer to [Quick Reference Manual](#) for more information.

Step 1: Install Cellapps Lite

Step 2: Registration

Select “Trial” version when the registration window appears. Cellapps Lite will allow you to continue evaluating the software up to 15 days from the installation.

[Know More...](#)

Step 3: Login as administrator

Use login name as “admin” and password as “admin” to login as administrator

[Know More...](#)

Step 4: Essential Configurations to be done

Go to menu Properties→System Properties→SMS Settings
(Select the device you are using and verify the default setting)

1. GSMMODEM
Set the Address (Phone or IP) to 127.0.0.1 (local host) at SMSC Configuration.
Also set the COM port to the one, which the modem is attached.
Keep all other parameters as default.
2. BSNLWEB
Set the BSNL configuration.
Enter the website: webmail.sancharnet.in
Enter your BSNL username and password.
Keep all other parameters as default settings.
3. NOKIAPHONE
Enter SMSC number at Address (Phone or IP) at SMSC Configuration.
Also set the COM port to the one, which your Nokia phone is attached.
Keep all other parameters as default.


[Know More...](#)

Step 5: Server and Spooler Configuration

- Set **server and spooler** by selecting the server configuration option as shown below
- Go to Properties→Server & Spooler→Server Configuration
- Set the web server to 8080, if IIS is running, else verify the same and keep the default setting.

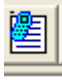
[Know More...](#)

Step 6: Send Bulk SMS through Built-in Web client

- Start the Web Server  and Spooler from the Toolbar on the right side of the application interface.
- Open the Internet Browser and type the URL <http://127.0.0.1:8080> and send SMS using the web interface.

[Know More...](#)

Step 7: Send Bulk SMS through CellApps Client Application.

- Start Multicast server  from CellApps-Lite other toolbar, which is on the right side of the application interface.
- Download CellApps Client.
- The default username is **guest** and password is **guest** for login.
- In main window enter the mobile number and message and press Send.
- Use Address book and other features.

[Know More...](#)

Quick Reference Manual-CellApps-Lite

CellApps Lite allows you and your LAN users to send SMS message from Web/CellApps client application to multiple users easily. It could be used as a marketing tool. The utility also allows maintenance of address book and loading mobile numbers from text files for broadcast messaging.

System Requirements to use CellApps-Lite are as below:

Hardware Requirement

- IBM PC –Pentium or above
- Minimum 64 MB RAM & 2 GB HDD
- 1 Serial Port for Data Card

Software Requirement

- Windows 95/98/2000/NT
- MS – Access / SQL Server

Mobile Devices

- Data Card
- Mobile SIM Card

You can start using CellApps-Lite right away by spending some time going through these easy steps:

Install CellApps-Lite.....	4
Free trial and Registration information	6
Initial Login	7
Main toolbar and other tool bar	8
Main toolbar.....	9
Other toolbar	11
Properties Configuration.....	11
System properties.....	12
Server and spooler.....	14
Multicast User Management.....	16
Other features.....	17
Manage CellApps users	17
Send Bulk SMS Built-in Web client	18
CellApps Client	19
Preferences.....	20
Address Book.....	20

Install CellApps-Lite

To install CellApps-Lite you can download the setup from the Link Below and run it.

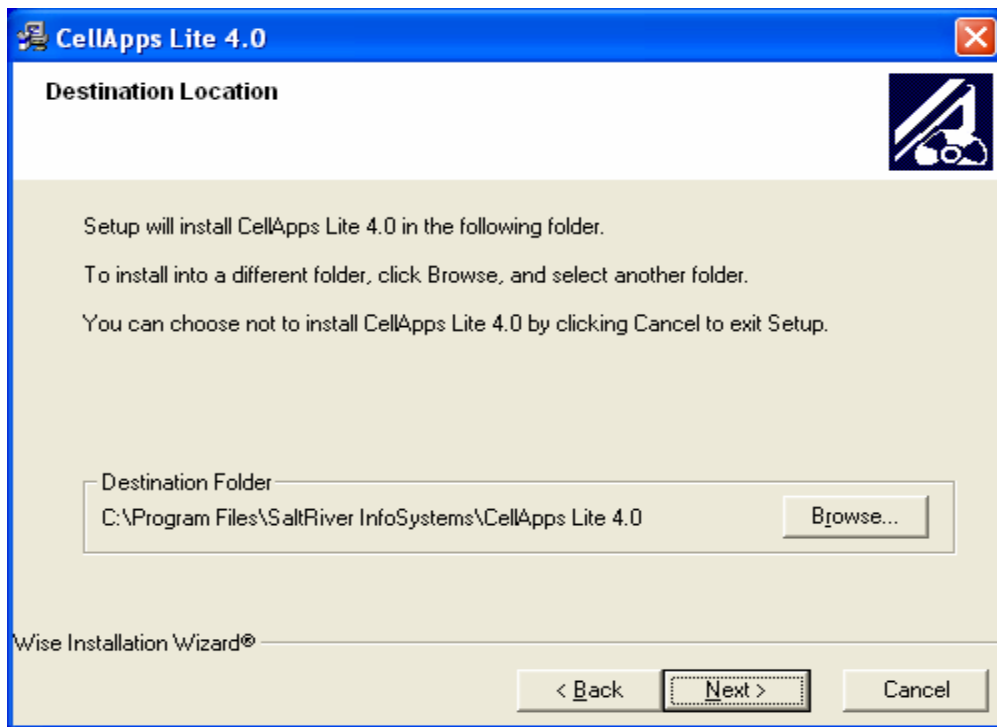
Follow the steps below to install CellApps-Lite in your Desktop then you are ready for other steps:

Step 1:

As soon as **setup** starts, it will show warnings and information window. Press **N**ext button to start the Setup.

Step 2:

The window with Destination Path to install the application will show up next. If the application is to be installed to a different path then, use **B**rowse button to select the path then press **N**ext button to continue.



Step 3:

The Start Installation window will show up next. Press **N**ext button to start the installation process. Use **B**ack button to make changes and again go through the step 3 to continue.

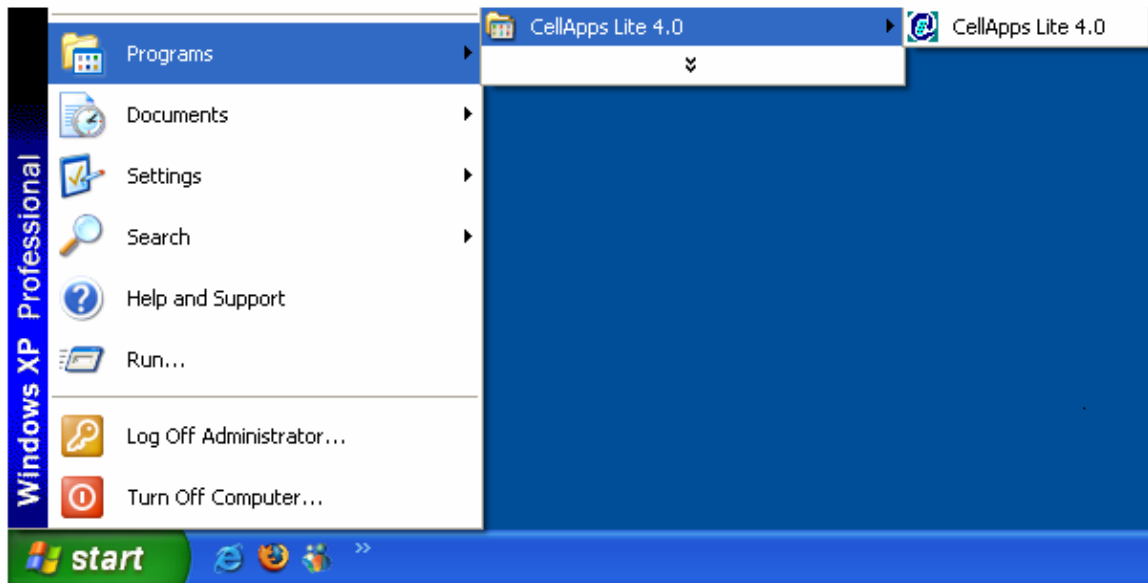
Step 4:

At the time when installation is in progress, the required files to run the CellApps-Lite will be copied in the system. When copying file is finished, setup will update your system's configuration.

Step 5:

On completion of the installation, a message window showing successful installation will appear. Click **Finish** button to end the Setup.

The Setup creates short cut in start menu. To open the CellApps from start menu go to Start → Programs → CellApps Lite 4.0 → CellApps Lite 4.0

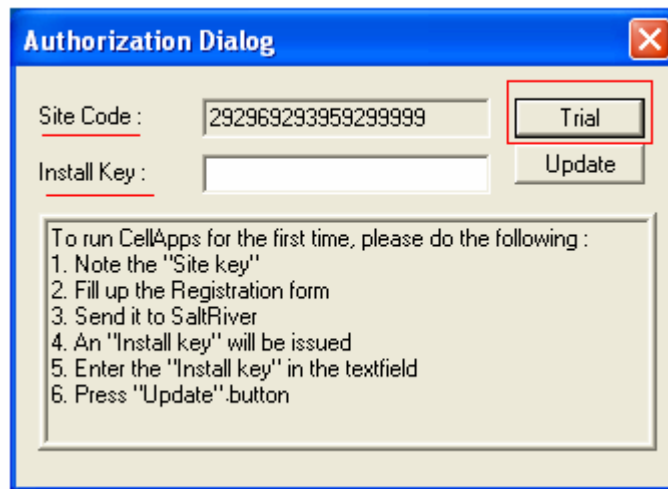


Free trial and Registration information

Note: CellApps-Lite gives 15 days trial version. After 15 days the application needs to be registered with the vendor to continue using CellApps-Lite.

Every time you enter the application, the Authorization Dialog will appear. Click on “Trial” to use the free trial and window for initial login will appear.

On expiration of the application a window asking the Install key appears. The “Install key” can be received from your vendor on giving the “Site Key” displayed during the license warning.



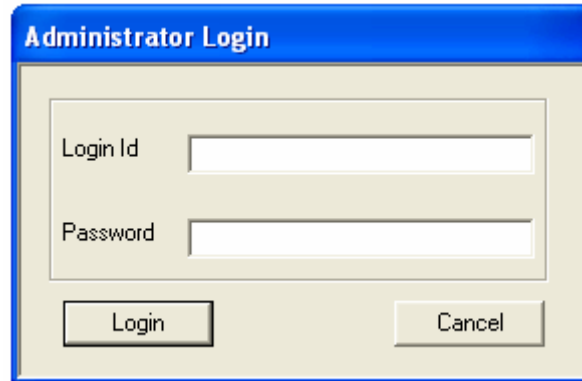
To Register your product follow the below steps:

1. Site Key is shown by default.
2. You have to contact your vendor for registration process.
3. Convey Site Key to your vendor. So that they can provide you the Install Key.

After you receive the Install code, Insert it and click **OK**.

Initial Login

The initial login will appear whenever the user starts the application once the product is installed and a trial version is chosen or the product is registered.



CellApps supports two types of Login in to the system.

Administrator: - Only Administrator can change the properties of CellApps and can start/stop various Server Components and Spooler Components of CellApps.

Normal User: - The user can only view the log of various activities of various Servers and Spoolers on CellApps.

On starting CellApps the user would be prompted for Administrative Login Id and Password. A Normal user can login to the system by clicking on **cancel** button, but valid user (not administrator) should enter his/her username and password to exit the system, whereas the administrator should enter Login Id/Password and press login.

You can enter **Login Id** as: **admin** and **Password** as: **admin** in Administrator Login. This will allow you to create users, as this is an administrative account.

Note: If you **cancel** the Administrator login dialog, you cannot exit the CellApps application. So you have to either enter as administrator or as valid user to exit the application.

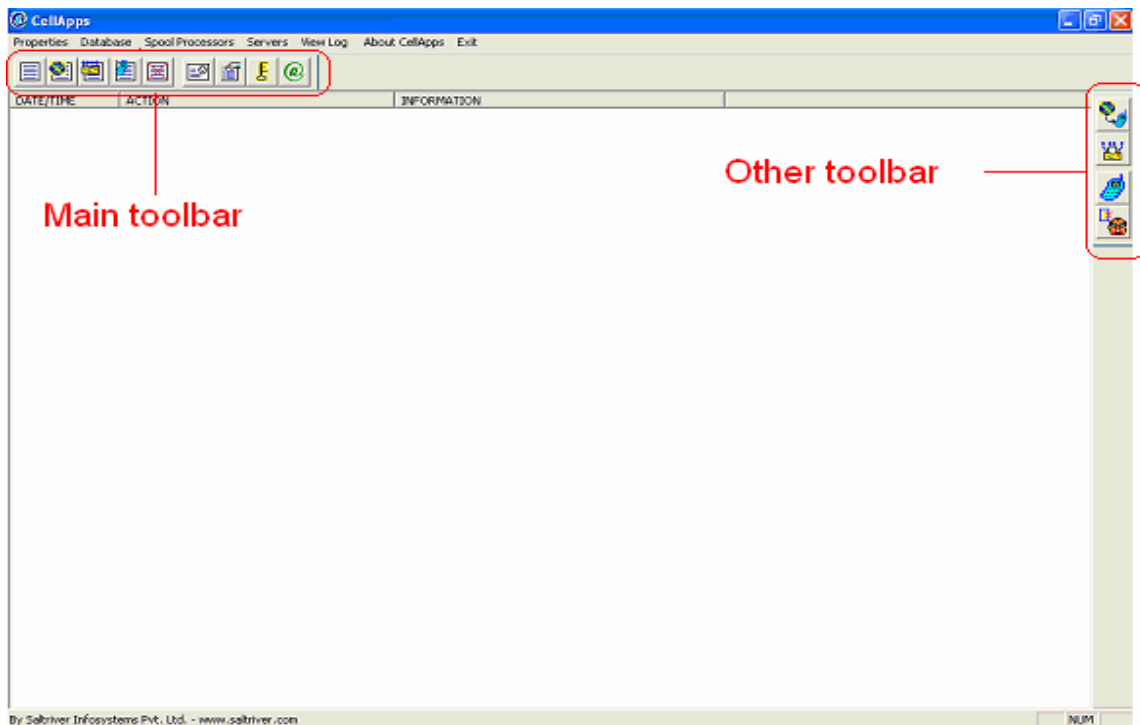
Main toolbar and other tool bar

On the User Interface there are two toolbars to control actions of the logged on user.

1. [Main toolbar](#)
2. [Other toolbar](#)

From the main toolbar the user can select the view he/she wants to view. The main toolbar also has buttons to control activity such as creating of accounts for multicast user, modifying of CellApps properties, Synchronization of subscriber's database.

Other toolbar is used to control the activation of Servers and Spool Processors.



[Main toolbar](#)

1. [All log](#)
2. [Web Request log](#)
3. [Multicast server log](#)
4. [View SMS log](#)
5. [View error log](#)
6. [Manage Multicast user](#)
7. [CellApps Properties](#)
8. [Login / Logout](#)
9. [About](#)

[Other toolbar](#)

Main toolbar

All log

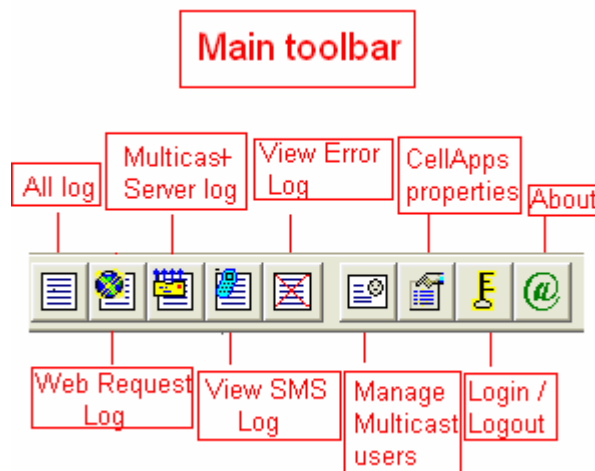
- Click this button to view log of all the activities of CellApps. This would report log of all the servers and all the spoolers. The format of the log displayed is **Date/Time Action Information**, Where Date/Time would specify the date and time of the activity, Action would specify activity performed such as a Web Request Received or a mail Received or Web Server Started etc.
- Information would specify additional data regarding the activity such as if a web request is received the information would display sender's name and destination mobile number, when an SMS is sent to a mobile it would display the mobile number and the message size.
- This button is enabled for normal user also.

Web Request Log

- Click this button to view log pertaining to the web server component of CellApps only. The Web Server component is used to receive request for sending of SMS Message from the web page and also to handle the registration request for mail notification in non-secured channel mode. The format of log is same as explained above.
- This button is enabled for normal user also.

Multicast Server Log

- Click this button to view log pertaining to the Multicast Server component of CellApps only. This component is used to validate a multicast user logging into system over LAN or RAS and to accept and deliver multicast message. It would display log of which User logged on the system for sending of multicast messages.
- This button is enabled for normal user also.



View SMS Log

- Click this button to view log pertaining to the SMS Spooler Component of CellApps only. This is the component, which communicates with the SMSC for actually delivering of messages to mobile devices. This displays log of SMS Messages, and their length, sent to various mobile numbers. In case of any error while delivering of SMS Message to SMSC it would log the error also.
- This button is enabled for normal user also.

View Error Log

- Click this button to view log pertaining to the Error Mail Generation Component of CellApps only. This component generates an error mail from pre-formatted error mail files and sends them to the sender. This log displays which error mail file was sent to what user.
- This button is enabled for normal user also.

Manage Multicast user

- Click this button to manage the accounts of the users who would be allowed to send Multicast messages using CellApps. The utility allows you to create/modify/delete the users for multicast utility.
- This button is visible for Administrator only.

CellApps properties

- Click this button to bring up the dialog in which you can modify the settings of various CellApps components.
- This button is visible for Administrator only.

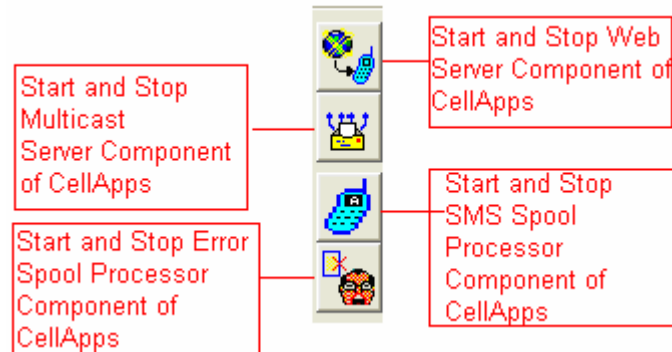
Login / Logout

- This is for administrator to login or logout from the system.
- This button is visible at all times.

About

- This button displays a dialog box containing information about Developers of CellApps.

Other toolbar

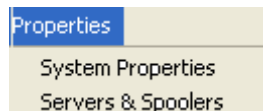


- The Other toolbar on the user interface is on the right side of the screen and is visible to Administrator only.
- This toolbar is used to control the activation of Servers and Spool Processors i.e. it can be used to start/stop a particular server or spool processor in case of some emergency or some configuration changes. For Example, if SMSC will not be accessible for a while due to any reason the administrator can stop the SMS Spool Processor for the time being so that it won't go to connect to SMSC and keep on generating errors on not being able to connect. Similarly if an SMTP server cannot be connected for time being the Error Spool Processor could be closed for a while so that it won't attempt to deliver error message.

Properties Configuration

The dialogs allow configuring Administrator settings for login and error message notification. The SMS Settings dialog allows configuring Message Length, SMSC and MSIDN prefixing beside the port to which GSM device is connected. User can select a GSM Modem or Nokia Phone from GSM Protocols list.

Above the main tool bar you can find the properties menu. Click on it and two options will appear.



- [System properties](#)
 1. [Administrator settings](#)
 2. [SMS settings](#)
 3. [System Properties](#)
- [Server and spooler](#)
 1. [Server](#)
 2. [Spooler](#)

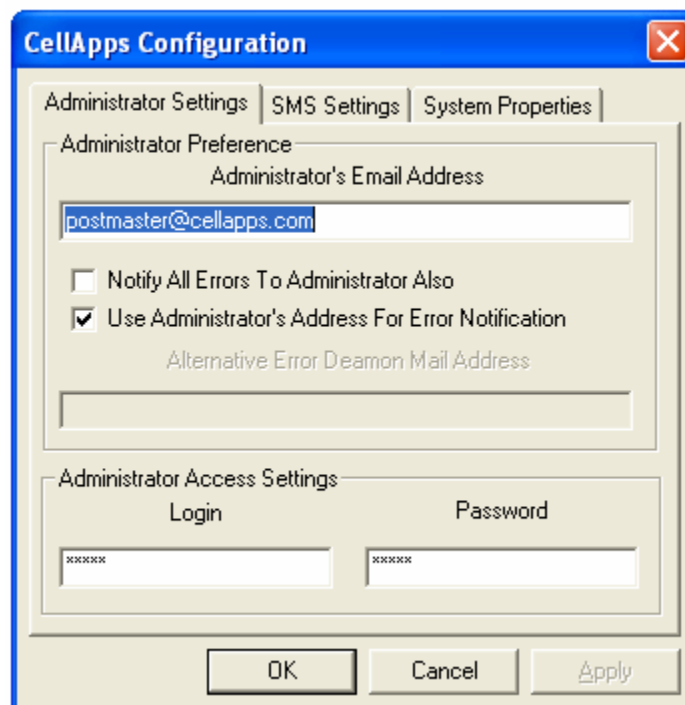
System properties

System properties configuration window has three settings

1. [Administrator settings](#)
2. [SMS settings](#)
3. [System Properties](#)

Administrator Settings:

- The Administrator Email Address will get error mail alert if Notify option is selected. In order to support multiple admin who can monitor for errors, alternative email address is provided.
- The Access setting allows specifying the admin user id and password details.



The screenshot shows the 'CellApps Configuration' dialog box with the 'Administrator Settings' tab selected. The window has a blue title bar with a close button. Inside, there are three tabs: 'Administrator Settings', 'SMS Settings', and 'System Properties'. The 'Administrator Settings' section is divided into two main areas. The first area, 'Administrator Preference', contains a text box for 'Administrator's Email Address' with the value 'postmaster@cellapps.com'. Below this are two checkboxes: 'Notify All Errors To Administrator Also' (unchecked) and 'Use Administrator's Address For Error Notification' (checked). A label 'Alternative Error Daemon Mail Address' is positioned above an empty text box. The second area, 'Administrator Access Settings', contains two text boxes labeled 'Login' and 'Password', both containing 'xxxxxxx'. At the bottom of the dialog are three buttons: 'OK', 'Cancel', and 'Apply'.

SMS Setting:

Leave Blank if opratoer allows

Enter the Country Code

SMSC No of your mobile phone (for NOKIAPHONE option), IP address of SMS server used to send sms(GSMMODEM option)

Serial port number 0, 1,2 ...

Message size

Enter 9600,8,N,1,n

In SMS protocol if you select BSNL WEB than here enter webmail.sancharnet.in and your BSNL ID and password.

System properties:

The Mail Server which application would use to send massages

The Max No of SMS segments

A valid Domain name which is accepted by the above Server.

If Selected, allows user to sand alert message to any mobile number / if not selected, restricts transmission of message only to mobile numbers configured into the system.

To restrict mobile originted services access to specific mobile number configured in the system.

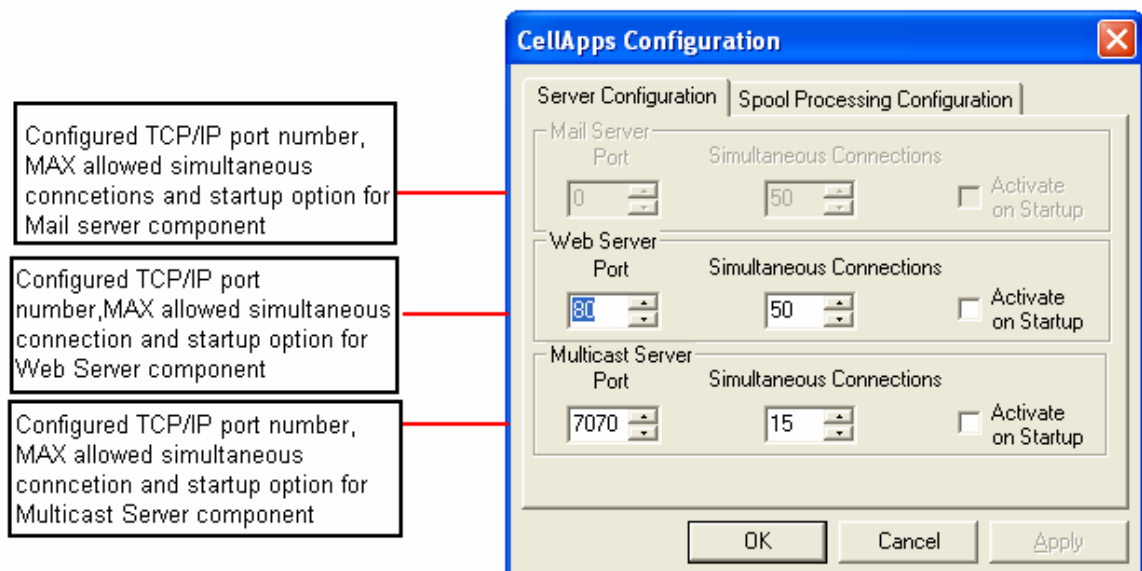
Server and spooler

[Server](#)

[Spooler](#)

Server Configuration

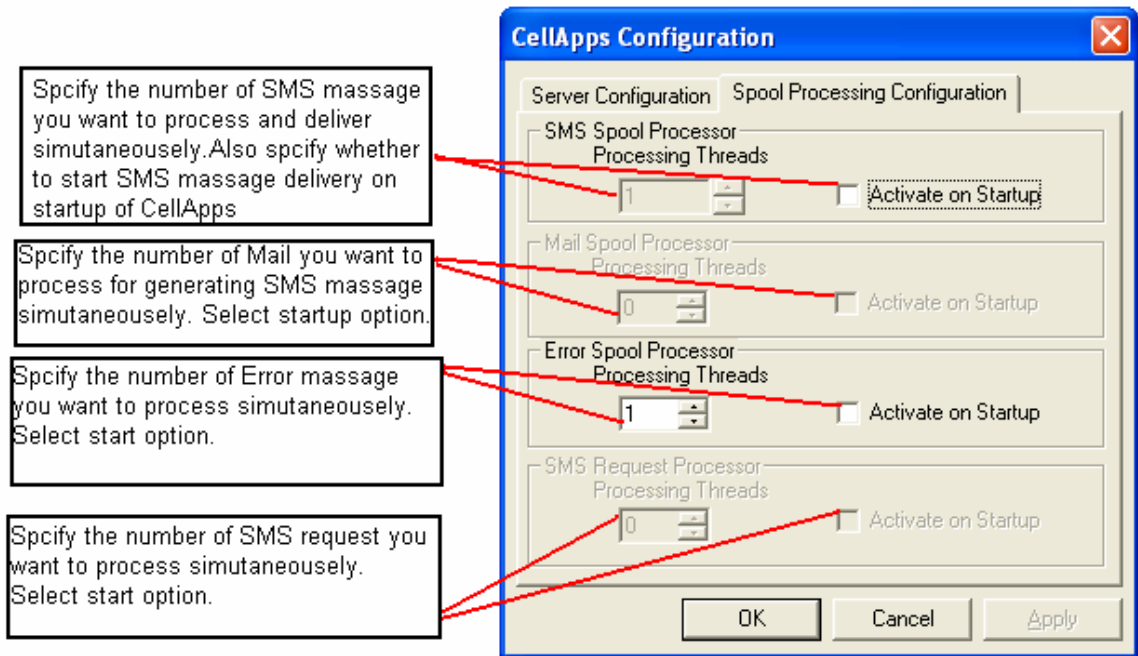
- Here while configuring Server & Scheduler Component of CellApps the administrator has to be very careful. The Mail Server Port (which would 25 in case the web hosting company which is hosting the service provider's web site cannot forward mail on an SMTP server running on non standard port) should not be changed without prior confirmation from web hosting company.



- For Web Server port, the default should be 80 but in case any other is selected from initial setup that should be mentioned in the link on the web to sms page and mail notification page. Whenever a change in the port number is made the web pages would have to update.
- For Multicast Server since it would be used for extranet purpose the administrator based on local configuration should decide the initial settings. The default that the client utility uses is 9025. So incase any other port is used that should be intimated to the administrator of client utility at all Multicast User's End.
- Ideally all server and schedulers should be activated on startup. The simultaneous connections parameter should be configured keeping in view the traffic.

Spooler Configuration

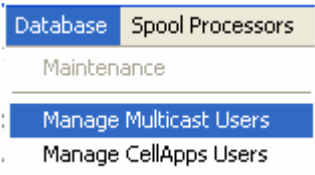
- Here you have to select an option which is critical in terms of performance criteria of the complete system - The simultaneously Processing Threads for each spooler.

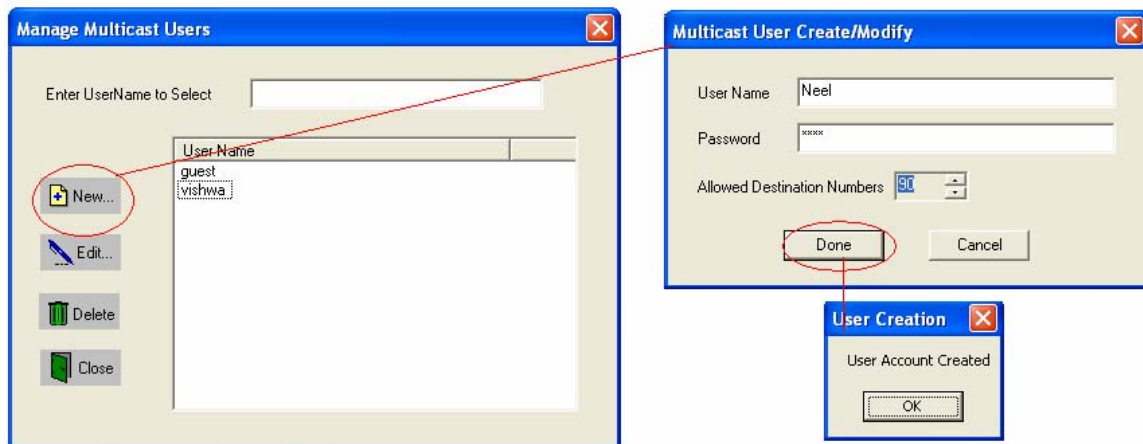


- For SMS – The number of threads would also be determined from SMSC configuration i.e. how many concurrent connections the SMSC is able to take and serve? How many concurrent login sessions can it allow?
- The Mail Processing threads can be decided from the mail traffic and does not depend on any external factor

Multicast User Management

A multicast user is the one who is allowed to log on to CellApps-Client and send a multicast message to a group of subscribers. This utility allows you to create and manage account for these type of users. It also allows you to restrict the number of mobile numbers to which a message can be sent at a time. In case if you want to disable the user for some time you can set the allowed limit to 0.

Open the Database option  and click on Manage Multicast Users.



New:

Click on **New** button to add new users and you will find the dialog box asking username and password. Here you can restrict the user to send number of Message at same time.

Edit:

Select user whom you like to edit and press **Edit** button.

Delete:

If you want to delete user then select that user and press **Delete** Button and user will be deleted.

Close:

You can press **Close** button to close the multicast user dialog.

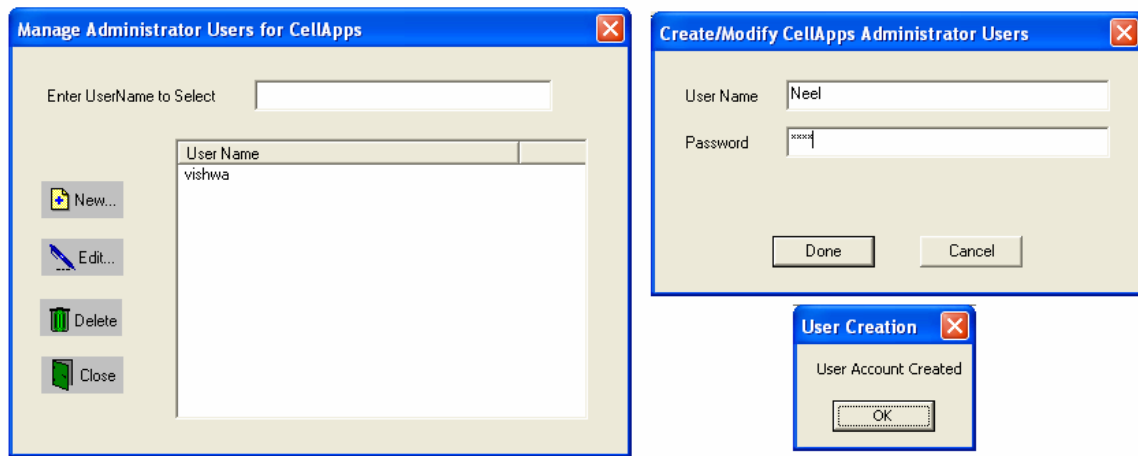
Other features

Here are some other features CellApps-Lite console window provides:

- [Manage CellApps users](#)
- [Spooler Process](#)
- [Servers](#)
- [View Log](#)

Manage CellApps users

You can Add, Edit or Delete User in CellApps. Open the Database option and select the Manage Administrator user for CellApps and following window and dialog boxes will appear.



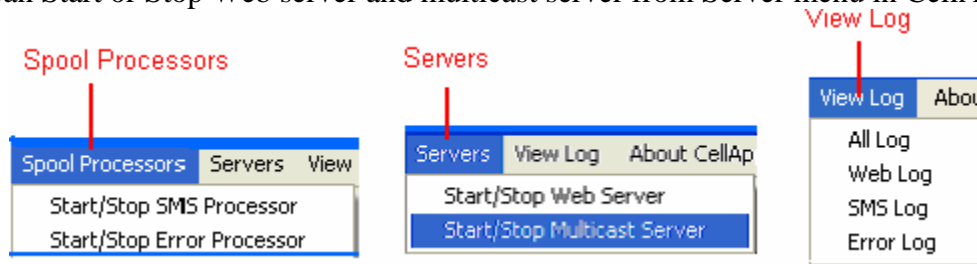
The created users can use all functionality of CellApps but they cannot access the DATABASE option of CellApps to create, edit or delete users and PROPERTIES option.

Spooler process

You can start or stop SMS and Error Processor also from Spooler process Menu that is right next to Database.

Server

You can Start or Stop Web server and multicast server from Server menu in CellApps.



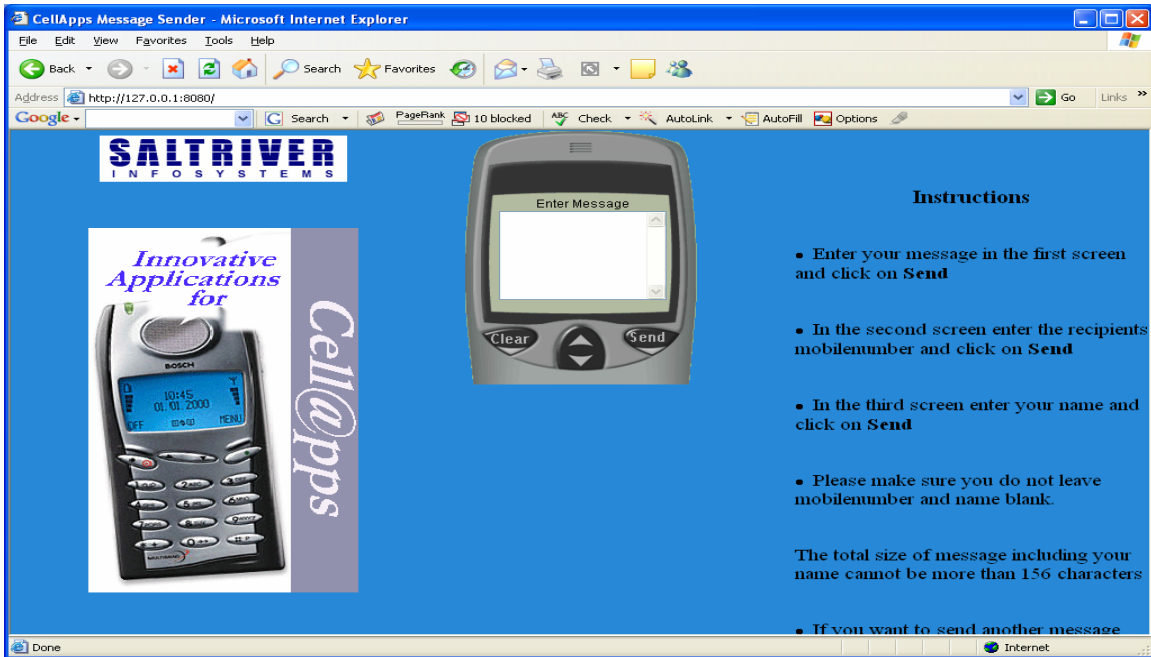
View Log

You can View Log of Web, SMS, Error or all from View Log menu at CellApps.

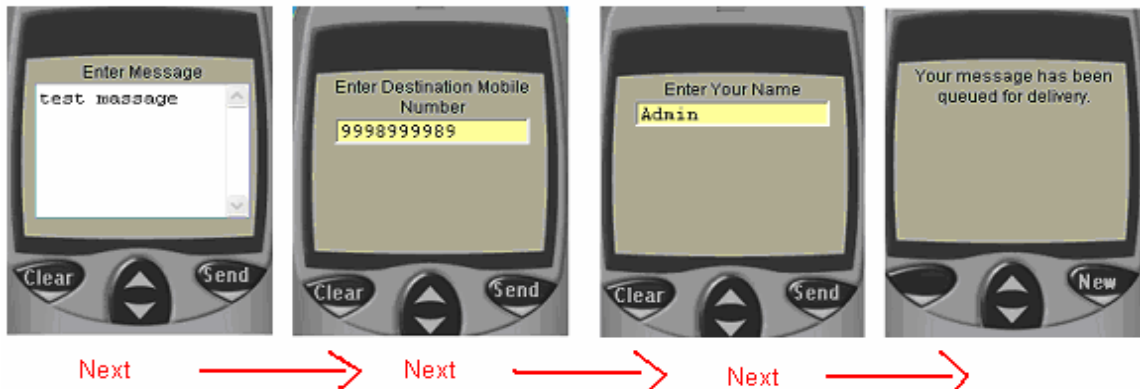
Send Bulk SMS Built-in Web client

Once you finish doing settings for all options, you are ready for sending bulk SMS with CellApps Lite. Here you have option to use [CellApps Client](#).

If you don't want to use CellApps Client then start Web server and both spoolers and now open your browser window and enter the URL <http://127.0.0.1:8080/> where 8080 is your Web server port which can be change by clicking on Server and Spooler menu at Properties and open Server setting in it. You will find the following window to send sms.



Press Send Button and follow the steps below;



To add multiple Numbers just use comma and keep entering the Mobile numbers. It will take 8 to 10 sec to send one SMS.

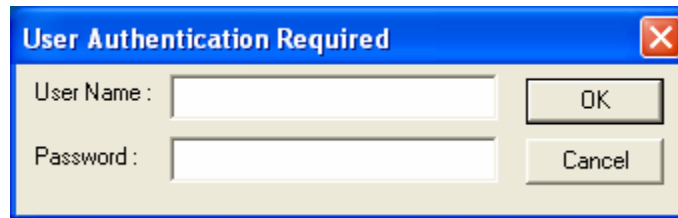
CellApps Client

We offer CellApps client to send bulk SMS as it has more facilities. You can download CellApps Client from download section of our site www.saltriver.com. Install the cellapps lite setup downloaded.

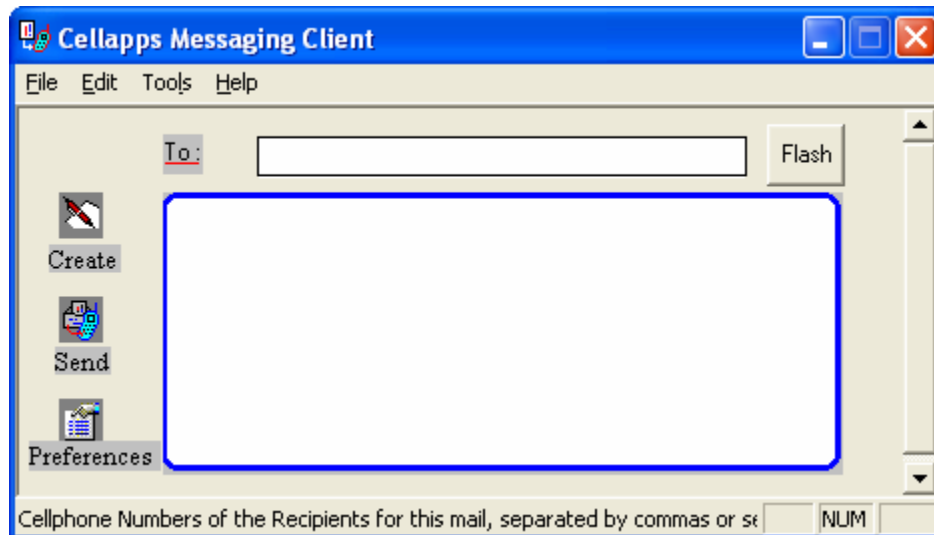
At start menu you will find the short cut CellApps Client 2.0.



Open the CellApps clients and enter the **Username** as **guest** and **Password** as **guest**, as it is default user. You can create User form [Multicast User Management](#) only if you are logged in as Admin in CellApps-Lite. Open Database option in CellApps consol screen then select multicast user management and Press **New** button to create user. Enter that user here.

A dialog box titled 'User Authentication Required' with a close button (X) in the top right corner. It contains two input fields: 'User Name : ' and 'Password : '. To the right of the 'User Name' field is an 'OK' button, and to the right of the 'Password' field is a 'Cancel' button.

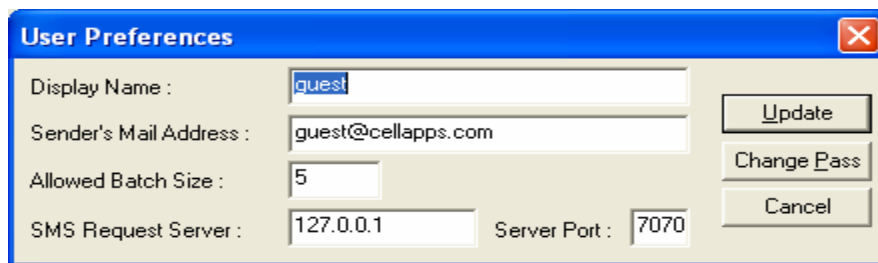
Once you enter the CellApps client you will fine the window below. Enter the Numbers and Press send and SMS will send.



CellApps Client has option like Preferences and Address book which are very helpful:
[Preferences](#)
[Address book](#)

Preferences

- To open the preferences, click on Edit menu or press CTR+P. It will ask you password as only admin in CellApps-Lite can use this option in CellApps Client.
- Enter the password as **admin** then you can open this option.



- You can edit the user here. Press Update to save the changes. You can also change the Password. Press **Change Pass** button.

Address Book

- To open the address book just click on Tools in CellApps client or CRT+B
- Fill the information and Save the address book.
- Now you can use **Select All** option form address book and send sms to all members of your address book at once.

