



<b>Document</b>	<b>Product Information Guide</b>
<b>Version</b>	<b>1.0.2</b>
<b>Project Name</b>	<b>Location Based Alerter ( LALU )</b>

## Description

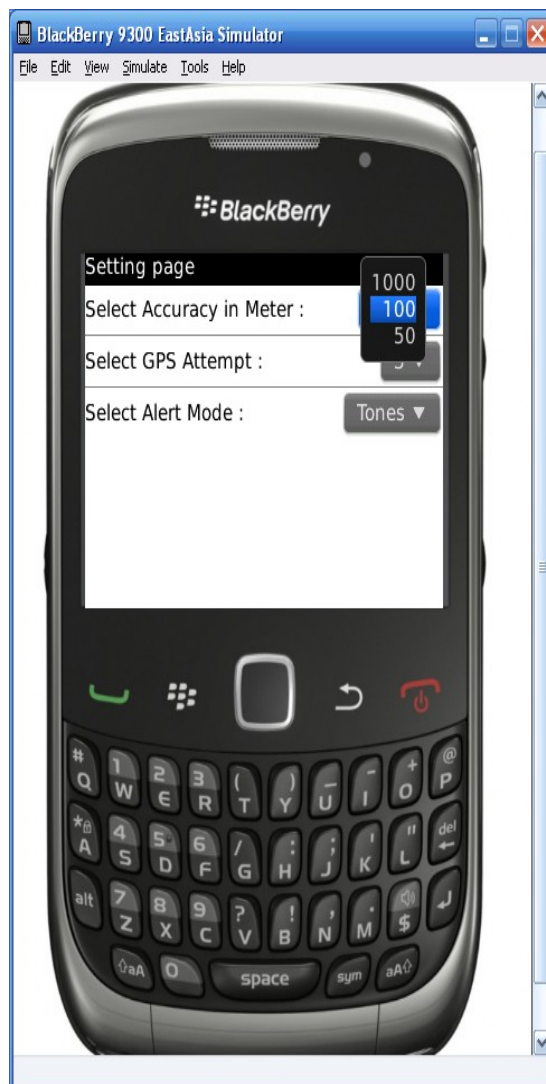
**GPS Based Location Alerter** is Application Based on Place not time. It is an innovative location based alerting reminder application. It can work on Blackberry mobile phones, The basic purpose of this application is that it will wake up the user before some time when its destination station comes. It also provide Remaining Distance in Km s or Meter.

## System Requirement

- Blackberry OS 5.0 or Higher
- **SD Card** is required for this application.
- **GPRS / WiFi** connection is required for this application.

## How to use this application

### Settings



- Here choose **Accuracy** in meter from choice. Accuracy defines GPS accuracy you required. Lower the accuracy you choose , it requires more accurate GPS and GPRS Service.
- Choose **GPS Attempt** : It is no. of attempt application will do to search for location.
- Choose **Alert Mode** : Choose Tone / Vibration as per your comfort.
- **Click on Menu , Click on Save to save Settings.**

## Log in



- Click on **Menu** , Go to **Log in**. If you do not have user credentials ( Account ) , then create one by clicking on **New User**.
- Submit your information and press **save**.
- **Now Log in with your log in credentials.**



## Alert Configuration

- After successful log in , you will see alert configuration screen.



- In this screen you can test **GPRS** and **GPS** by clicking on **check GPRS** and **current Location**.
- In **Alert Area field** , you can type area name with city name or you can choose from **Area List**.



- To choose from **Area List** , Go to menu -> Area List.
- Select particular area , and click on it. Then choose **insert** . Your area will be entered.
- Choose **Alert Mode** : Alarm or SMS.
- If you choose **SMS** , message will be sent on mobile no. you specified.
- If you choose **Alarm** , an alarm will be started.
- Choose **Alert at**: Reaching / Leaving.
- If you choose **Reaching** , Alert will be started when you reach particular area you mentioned in Alert Area field.
- If you choose **Leaving** , Alert will be started when you leave particular area you mentioned in Alert Area field.

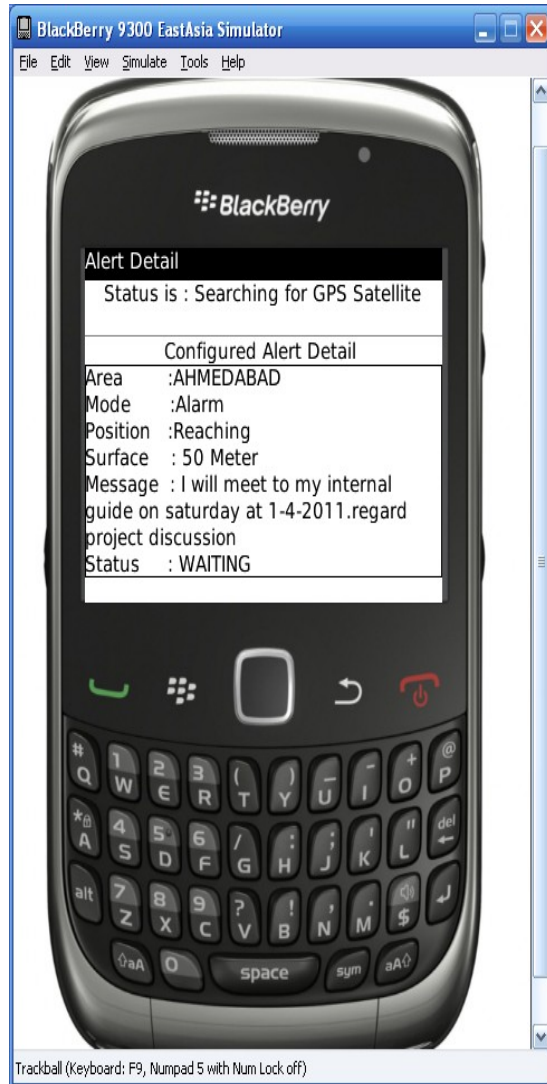
- Choose **Distance Mode** : Meter / KM
- **Distance field** : Choose distance at which you want alert.
- **Click on Menu** , choose **Next**



- if you have choose **SMS** then following screen will be displayed. Enter **mobile no.** on which you want SMS alert. Enter **message**.



- Click on **Save** and your **alert** will be saved.
- You can view your alert detail by click on **Menu** , select **view detail**.



## FAQs

- **How to start application?**

You can find LALU application , in Downloads .Click on it and application will get start.

- **Do we need to give extra permission to application?**

No , you don't require it.

- **How to know about Blackberry OS?**

Go to options -> About. You can Blackberry OS details

- **How to turn on GPS?**

This application uses GPS service. To turn on Go to options -> Advanced Options -> GPS

Select GPS Data Source = Device GPS , GPS Services = Location ON , Location Data = Enabled , Location Aiding = Enabled. Click on menu , choose save.

- **How to turn on GPRS?**

To turn on GPRS , Go to Manage Connections , Choose Wifi or Mobile Network. As you have already inserted your sim card so by default is on. In Mobile Network options choose data services option ON. Choose Network Selection mode 3G & 2G.

- In wifi , choose set up wifi network. It will help you configure wifi connection.