

# **IReporter User Manual**

**Saltriver Info System Pvt. Ltd.**

## IReporter User Manual

- **Introduction**

IReporter Application is use to capture images from your web cam and store it on server. It is use to keep watch on sensitive areas.

- **Features**

- It silently records computer screens at user defined time interval.
- Recorded screens can be viewed from website.

- **Prerequisites**

- Internet access must be available on each computer.
- Web cam

- **How it works?**

1. Create an Account on <http://www.mcameraapps.com> website.
2. Download and install IReporter.

Before installing IReporter you have to install JRE (Java Runtime Environment ) and JMF (Java Media Framework) in your machine.

You can download it from the following location:

“**JRE**” : [http://saltriver.com/Upload/Java/jre-1\\_5\\_0\\_09-windows-i586-p-s.exe](http://saltriver.com/Upload/Java/jre-1_5_0_09-windows-i586-p-s.exe)

“**JMF**” : [http://saltriver.com/Upload/Java/jmf-2\\_1\\_1e-windows-i586.exe](http://saltriver.com/Upload/Java/jmf-2_1_1e-windows-i586.exe)

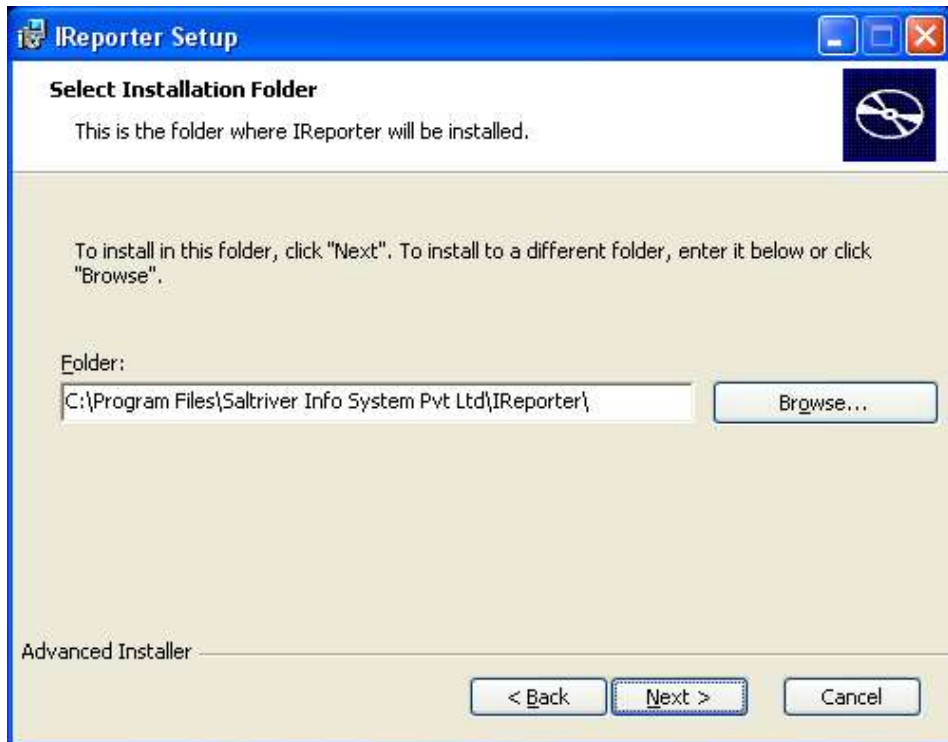
Now download IReporter Setup from following location:

“<http://saltriver.com/Upload/IReporter/Setup.zip>”

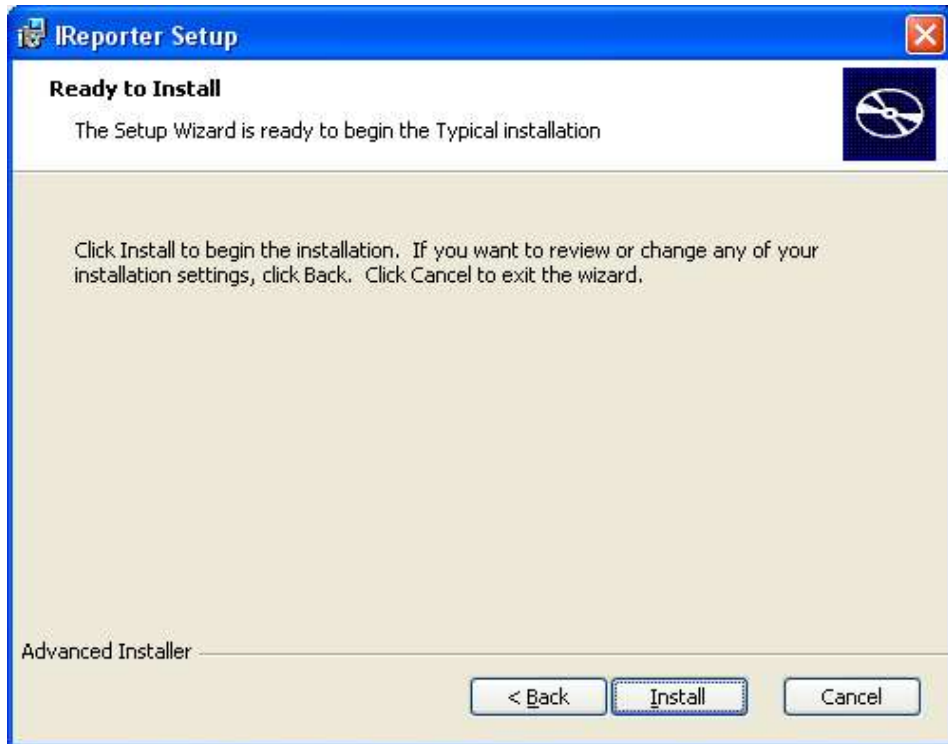
Unzip downloaded Setup.zip file and run IReporter Setup file and install it on your computer and follow the instructions.



click on Next to continue installation.



Select Installation directory and click Next or directly click on Next button to install it in default location.



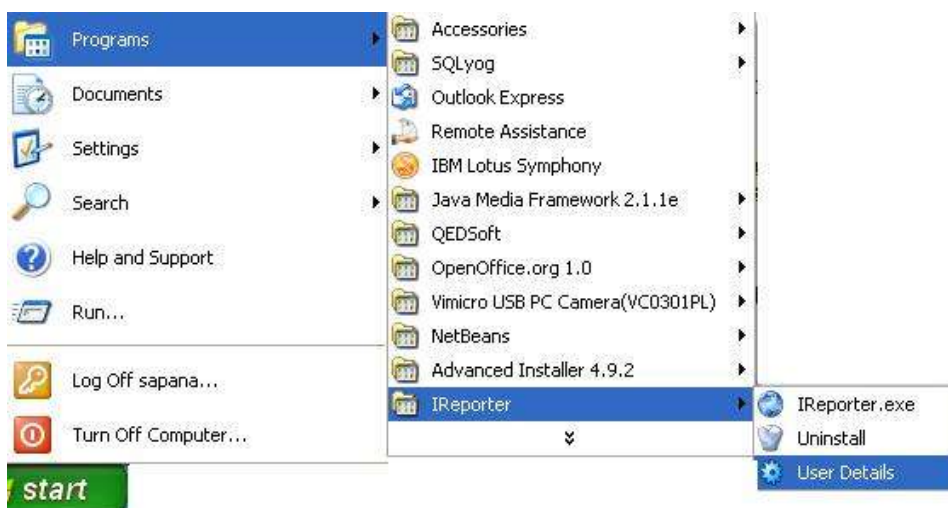
Click on Install.



Click Finish to complete installation.

3. Configure your username and password and observation interval time and camera id.

Click on **User Details** from start menu.

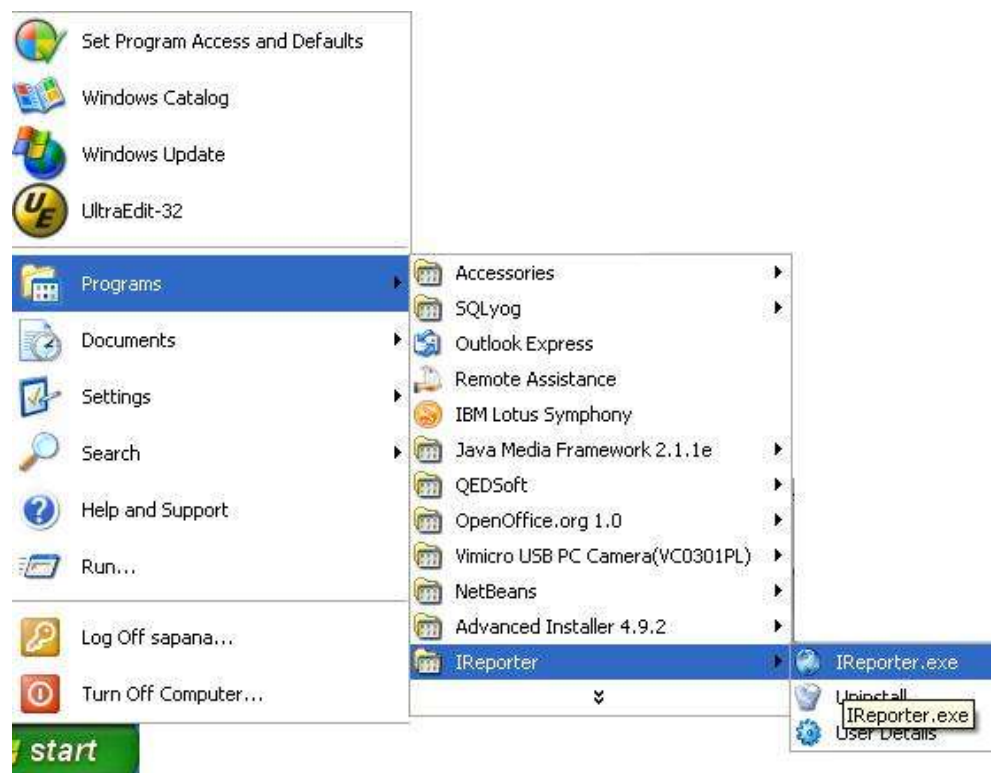


In that file change your username and password, Camera Id and observation interval.

As follows

```
username = your_username  
password = your_password  
cameraid = 1  
delay = 15
```

4. Then launch IReporter Application.  
By executing IReporter.exe file from start menu.



It will shows following screen.



Enter your Username and Password then click on Login button to start IReporter



Click on “Trial” button if you want 30 days trial period of IReporter Application.  
 Or Click on “Register” button if you want to register the IReporter Application.  
 Or click on “Exit” button to close the application.

### **Trial Version**

If you have selected Trial period in the first dialog box then when you start IReporter Application again it will show following dialog box after login.



Click on Continue button to continue with trial version or click on Register button to register IReporter Application.

## Registered Version

### How to register IReporter Application?

Click on "Register" button , it will show the following window.



Which shows Site Code for your machine. Give that site code and your scratch card number to provider and get a Authorization Key from provider. Enter Authorization key and click on register button. If Authorization key is valid then it starts IReporter Application and starts capturing images and uploading images on server.

## IReporter Application

It starts IReporter Application.

Click on Start Button to start uploading images from your web cam.



It uploads images in your account in particular camera which you have configured in User Details.

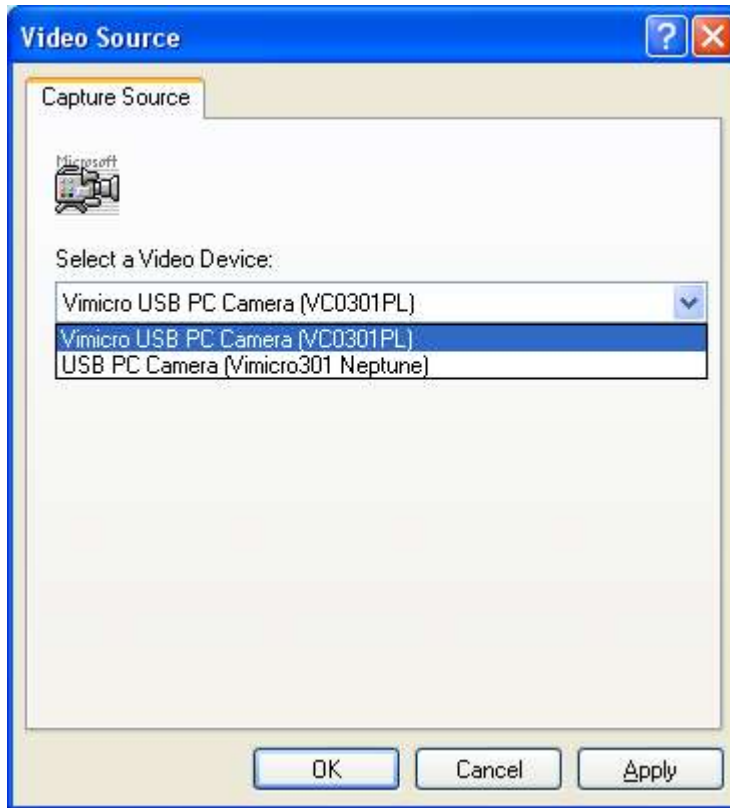
### **For Multiple Camera**

If you want to start another camera on the same computer then first you have to change the camera id in **User Details** from start menu under IReporter.

Change your Camera Id

cameraid = **your\_camera\_id**

save it and start IReporter and login into it.  
it will show the following window



from this window select another web cam which you want to monitor.

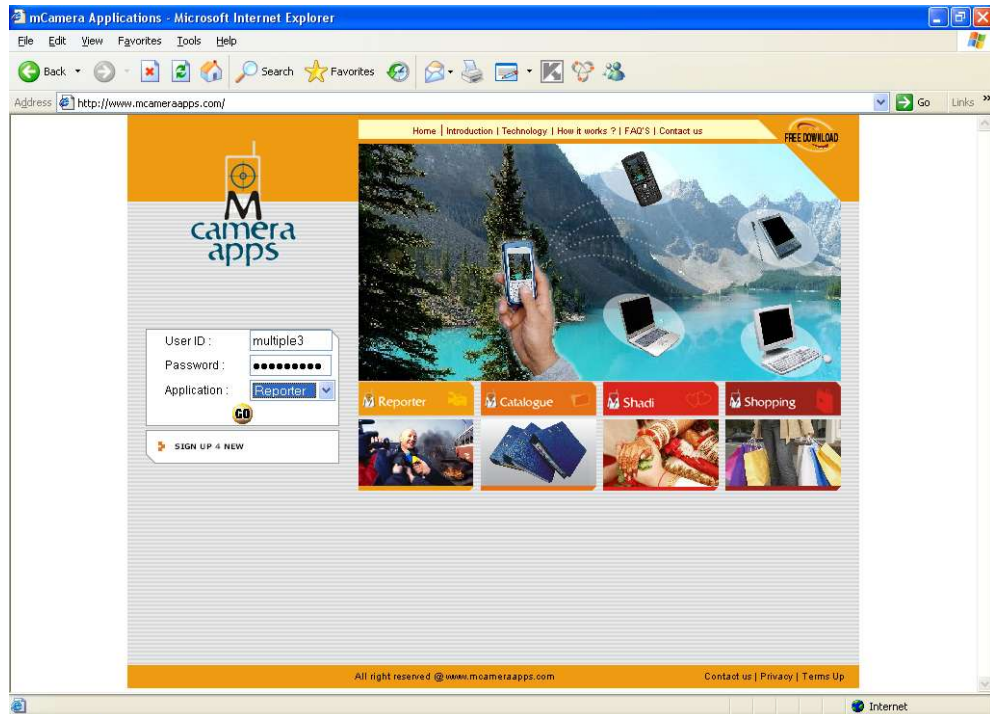


When you want to stop uploading images then click on Stop Button.

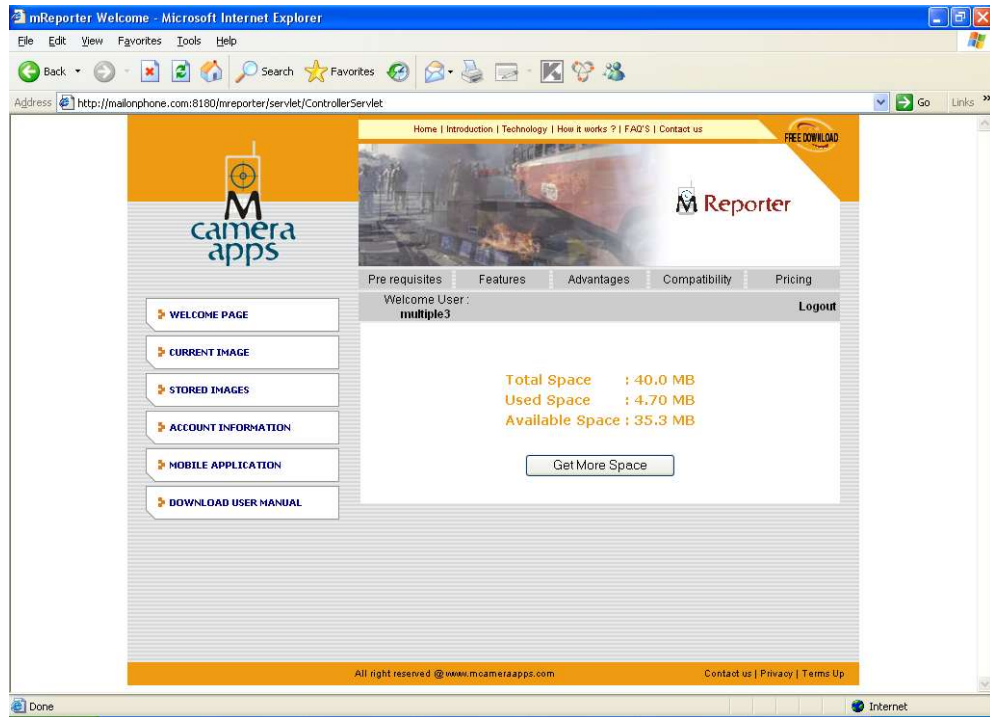
##### 5. Monitor Uploaded Images.

Now you can monitor all uploaded images from the website <http://www.mcameraapps.com> with same Username and Password information.  
As follows

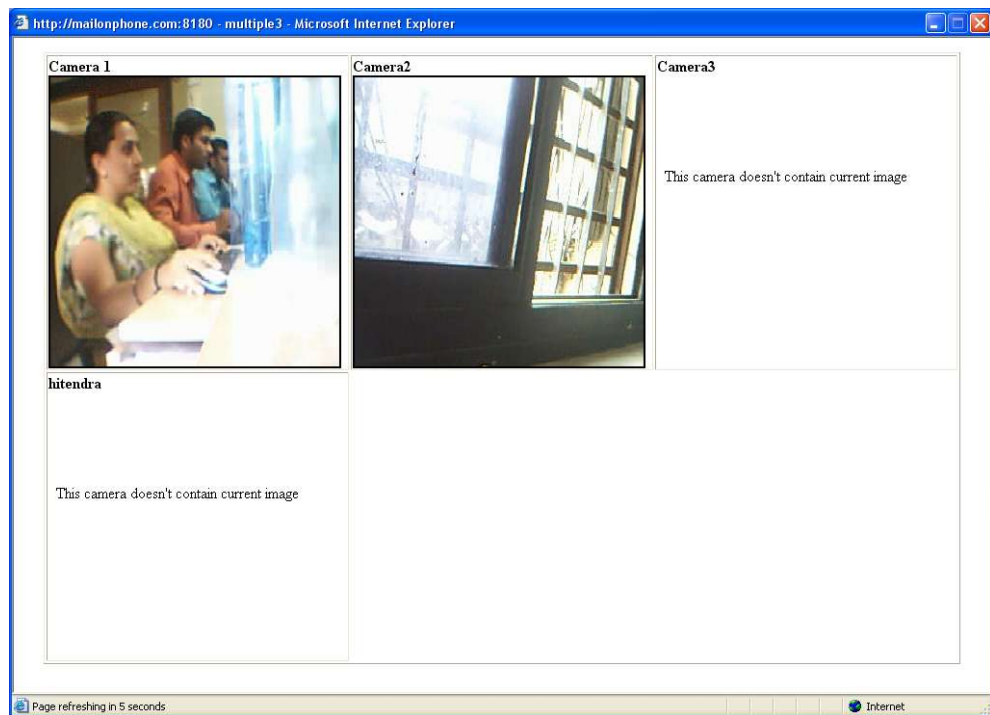
Open URL <http://www.mcameraapps.com> and login into your account



Then it shows Welcome Page



Click on **Current Image** from the left menu to view last uploaded image in different cameras.



Click on **Stored Images** from the left menu to view all stored images.

